

Inclusion Department Newsletter

Autumn 2022

A note from the SENDCo

I am delighted to be writing to you as the new SENDCo and leader of the Inclusion team at Outwood Grange Academy. I am passionate and dedicated to championing all students to thrive during their time at OGA and leave with the life skills, positive experiences and qualifications they need and deserve to be successful in the future, whatever their aspirations. Ms Benson has returned to her role within the Trust whilst still supporting the department and our students in her role as Senior Director of SEND. We are always looking to build and strengthen our relationships with parents and carers - key contacts are provided so please do not hesitate to contact one of the team, should you need to. On a personal note, I am looking forward to meeting and working with all parents/carers in the future.



Updates and latest news



Friday 16th September was Teaching Assistant Appreciation Day where we celebrated our amazing support staff in the department. The team enjoyed breakfast and staff from around the Academy sent messages of appreciation. It was lovely to reflect on and recognise the fantastic work our staff day in, day out for the benefit of our students.

Following a mental health session during the October INSET day, the wonderful Mrs Varrier, Bridge Co-ordinator, has made a display to support students with their mental health. It includes a worry monster for students to write down their concerns and an inspirational 'bee' positive pot.



Students within the department raised £60 for the Royal British Legion by making and selling poppies. Staff and students wore them with pride as the Academy held a remembrance service and two minute silence on Friday 11th November at 11am. A special thanks to Mrs Pierrepont who supported the students in this.

Student success!

One of our year 11 students who, along with a team of plays from the Learning Disability Rugby League, received an award for recognition for participation and effort throughout the season. Congratulations!



Changes to break/lunches

Students can now enjoy their break and lunch times in the Academy's Aspire lounge, located near the Learning Manager's office and main school restaurant. This is a quiet area for students to socialise, eat and relax with sofas, bean bags and games!



Advice and support

Wakefield Parent Carer Forum

<https://www.wakefieldparentcarers.co.uk/>

Wakefield Early Support Advice Information and Liaison Service (WESAIL)

<https://wakefield.mylocaloffer.org/wakefield-early-support-advice-information-and-liaison-service-wesail>

Wakefield Awareness Support Project (WASP)

<https://wakefield.mylocaloffer.org/wakefield-awareness-support-project-wasp>

Wakefield Families Together

<https://www.wakefieldfamilies.together.co.uk>

Special Educational Needs and Disabilities Information Advice and Support Services (SENDIASS)

www.kids.org.uk/sendiaass

Meet the team



Dan Evans
SENDCo



Tom Marris
SEND Officer



Nicola Seaman
Inclusion Officer



Tracy Parsley
Inclusion Admin



Hayley Varrier
Bridge Co-ordinator



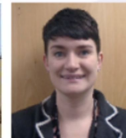
Fiona McClure
PLC Co-ordinator



Charlotte Hawkhead
Advanced Teaching Assistant



Daniela Castiglia
Advanced Teaching Assistant



Rachel Williamson
Advanced Teaching Assistant



Vicky Grainger
Teaching Assistant



Angela Mertzianis
Teaching Assistant



Hannah Colley
Teaching Assistant



Sue Thirkill
Teaching Assistant



Maureen Hudson
Teaching Assistant



Janet Bromberg
Teaching Assistant



Alison Rawle
Teaching Assistant



Andrea Metcalfe
Teaching Assistant



Emily Giblin
Teaching Assistant



Jonathan Archer
Teaching Assistant



Gill Pierregiorgio
Health Care Assistant

Upcoming dates for the diary

- 24th November - Year 11 drop-down day (Theme - "Your place in the wider world")
- 6th December - KS4/5 Parents' Evening
- 14th December - Inclusion Nibble & Natter**
- 14th December - Music Christmas concert
- 16th December - Attendance celebration event
- 10th January - Year 9 guided pathways evening
- 24th January - Year 11 drop-down day (Theme - "Revision and study skills")
- 7th February - KS4/5 Parents' Evening
- 21st February - KS3 Parents' Evening
- 3rd March - Year 11 drop-down day (Theme - "Mental Health and Wellbeing")
- 6th March - Year 11 mocks start



Keep in touch

Inclusion

Dan Evans - SENDCo
Nicola Seaman - Inclusion Officer
Tom Marris - SEND Officer

Learning Managers

Rachel Armitage - Year 7
Rebecca Kara - Year 8
Katie Kilner - Year 9
Kenzie Smart - Year 10
Jess Power - Year 11

firstinitial.surname@grange.outwood.com



If your child has an Education and Health Care Plan (EHCP) your key contact is Mr Marris. If you have a child with other additional educational needs your key contact is Mrs Seaman.